



Successful Team Networking & Business Strategies

**Presented By: Janet Antilla
Business Mentor-FRC #2604**

Four golden, 3D-rendered human figures are arranged in a circle, shaking hands. They are stylized with large, rounded heads and simple bodies. The scene is set against a plain white background with a soft shadow beneath the figures.

Getting Started

-Who Are You?

-Team Identity

-Team Goals

Business Plan

Four golden, 3D-rendered human figures are arranged in a circle, shaking hands. They are highly reflective and have a bright yellow-gold color. The figures are stylized with large heads and simple bodies. The background is a plain, light-colored surface.

- More than a Budget



Mission Statement

Identify yourself

- What do we do?**
- How do we do it?**
- Whom do we do it for?**
- What value are we bringing?**

-

The background of the slide features two golden, 3D-rendered human figures. They are standing and shaking hands in a firm grip. The figures are highly reflective, with bright highlights and shadows that give them a metallic, three-dimensional appearance. They are positioned centrally, with their bodies partially overlapping the text.

Examples

“Team 2604 Metal and Souls mission is to excel in the building of a better people in a better community by becoming leaders in building a foundation for STEM education and careers.”

“To develop a sustainable, year-round FIRST team that brings together a diverse body of students, parents, and mentors for a fun and inspirational learning experience in engineering and teamwork.”

“Our mission is to develop a cohesive, inspired team that uses wit, ingenuity and applied science to reach for MARS (Mega Awesome Robotic Systems). We plan to interest as many people as possible in going along for the ride!”

Four golden, 3D-rendered human figures are arranged in a circle, shaking hands. They are stylized with large heads and simple bodies, rendered in a bright, metallic gold color. The background is a plain, light beige gradient.

Executive Summary

-Begins with Mission Statement

-Team Origins

-Team Members

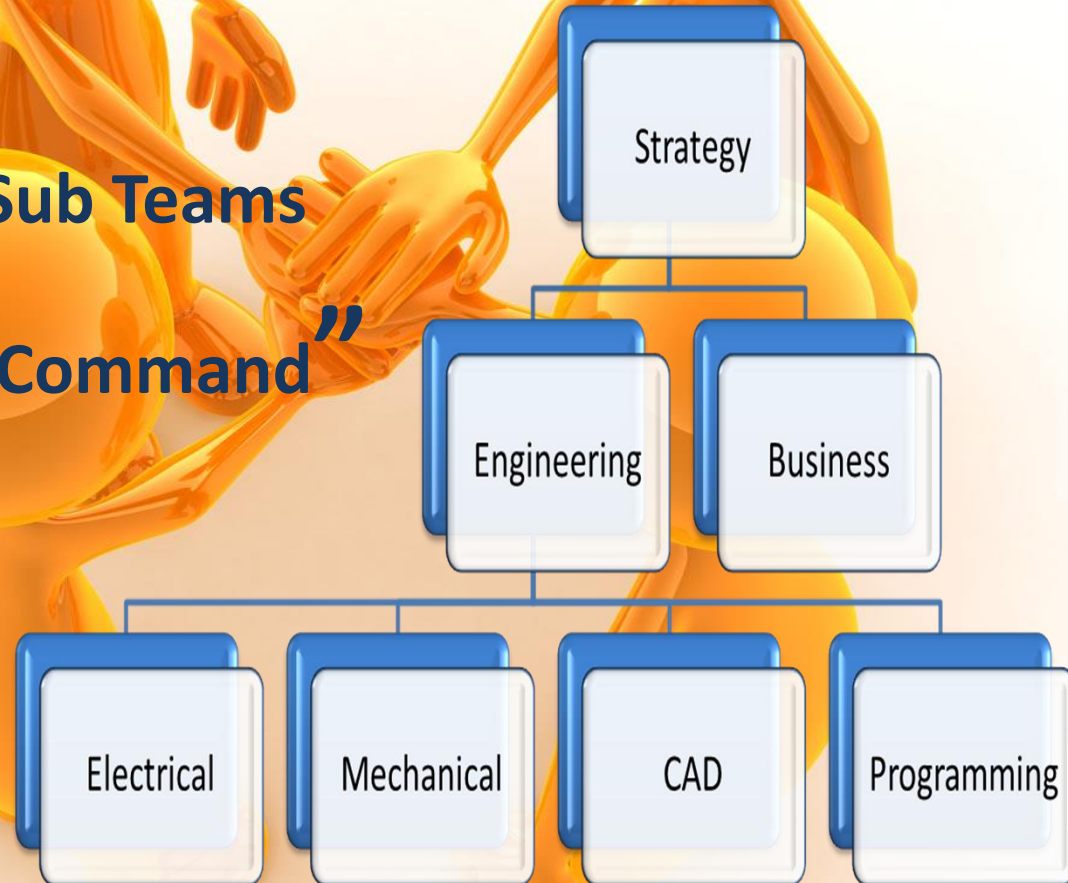
-Sponsors

-Services Rendered

Organizational Chart

-Flow of Sub Teams

- “Chain of Command”



Four golden, 3D-rendered human figures are arranged in a circle, shaking hands. They are highly reflective and have a bright yellow-gold color. The background is a plain, light-colored surface.

Partnerships

- Sponsor details/ relationships

Team Growth

- Timeline

- Show Sustainability



Member Responsibilities

- General expectations

- Code of Conduc

Sub Teams

- Responsibilities

- Captains



Contingency Plan

-What if?

- Have a Plan

Things happen!

Outreach

Three golden, 3D-rendered human figures are shown in a circle, shaking hands. They are stylized with large heads and simple bodies, rendered in a bright, reflective gold color. The background is a plain, light beige gradient.

- Short Synopsis of Activities
- Show diversity of Activities
- Tie into FIRST Goals

Four golden, 3D-rendered human figures are arranged in a circle, shaking hands. They are highly reflective and have a bright orange-gold color. The background is a plain, light-colored surface.

Team History

- **Short Essay**
- **List Awards by season**
- **Include off season**

Four 3D rendered orange figures are arranged in a circle, appearing to be in a meeting or discussion. They are stylized, rounded characters with large heads and small bodies. The background is a plain, light-colored surface.

Team Budget

- Income & Expenses
- Breakdown Funding
i.e. Sponsorship/Grants/school
- Pie Charts

Four golden, 3D-rendered human figures are arranged in a circle, shaking hands. They are highly reflective and have a bright yellow-gold color. The background is a plain, light-colored surface.

Future plans

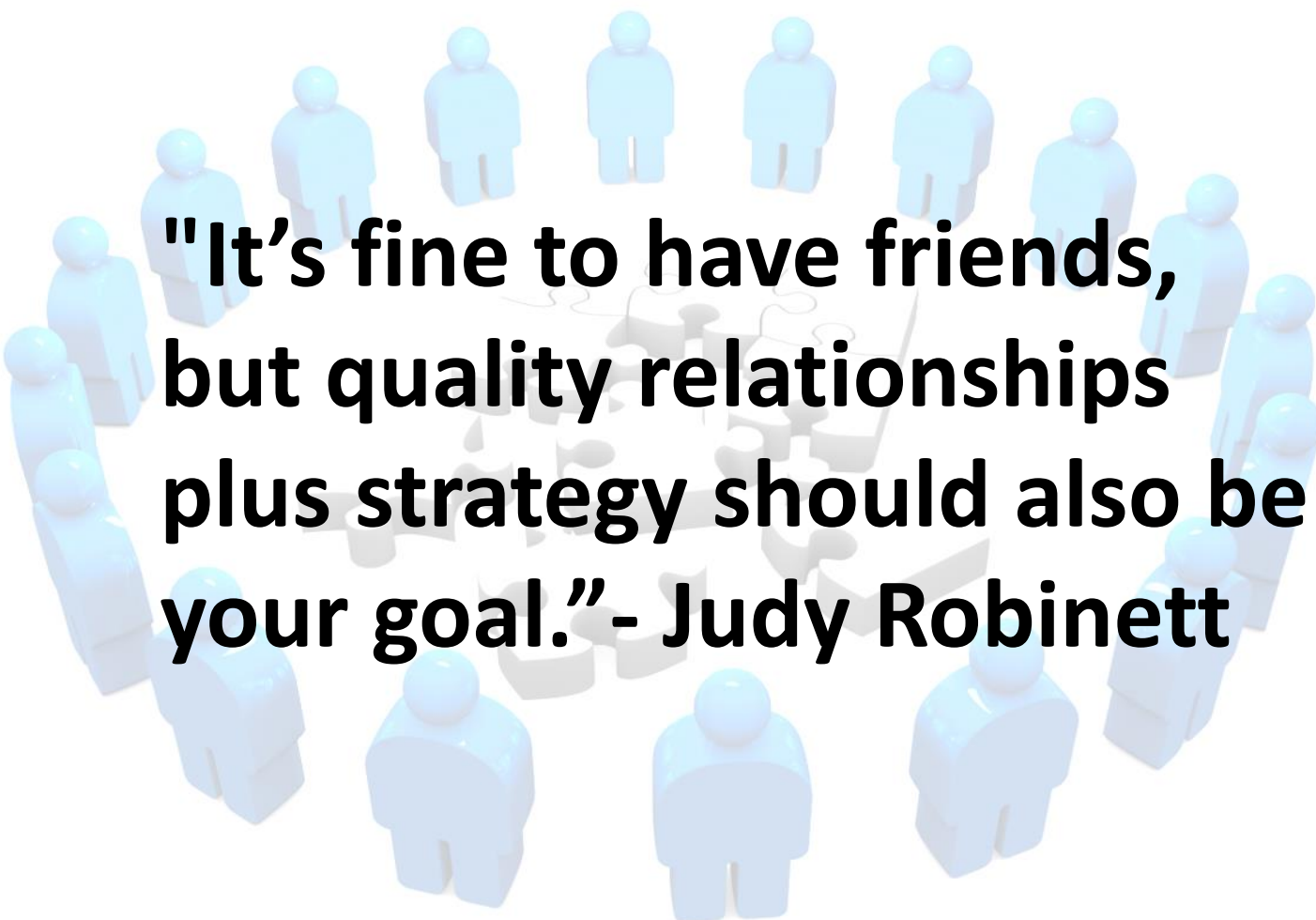
- **Activities**
- **Expansion of Programs**

Networking





KEY to Success

A group of 18 light blue 3D human figures arranged in a circle around a central puzzle. The puzzle is composed of several interlocking pieces, with one piece missing, creating a gap in the center. The figures are positioned around the puzzle, some standing and some sitting, suggesting a collaborative effort or a group working together to solve a problem.

**"It's fine to have friends,
but quality relationships
plus strategy should also be
your goal."- Judy Robinett**

INVEST IN OTHER PEOPLE AND BE DIRECT

- Don't be afraid to share your resources

“Imitation is the best form of Flattery”

-State your needs

-strengths & weaknesses

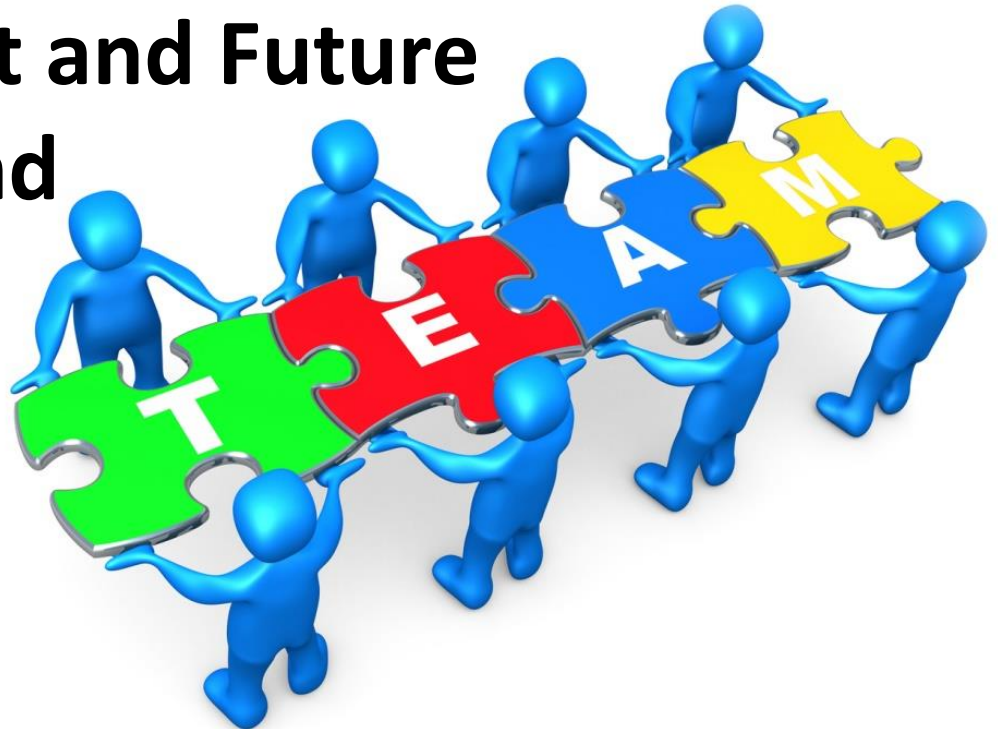
-Don't sell what you don't have

-Follow through



ORGANIZE YOUR CONNECTIONS

- Create a Directory
- Keep Current and Future Goals in mind



ALWAYS SAY THANK YOU...



**...Even if it doesn't fit your
current needs.**

DON'T BURN BRIDGES AND (KEEP YOUR EGO IN CHECK)

- **Gracious Professionalism**
- **Remember we all have good and bad seasons**
- **Don't engage in team politics**

